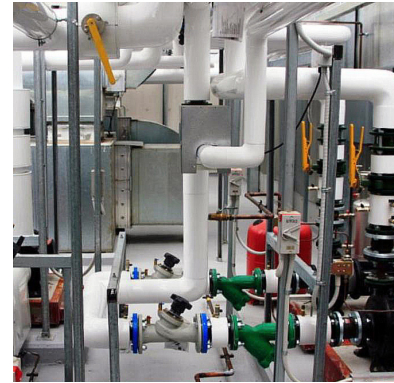
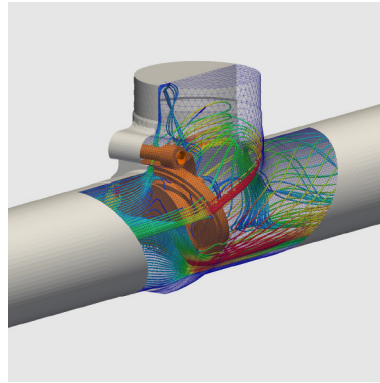


32A SERIES



FABRICATION RANGE SWING CHECK VALVES

UTILIZATION:

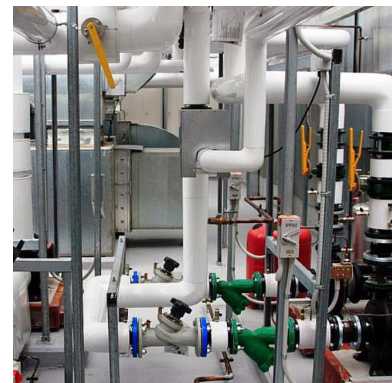
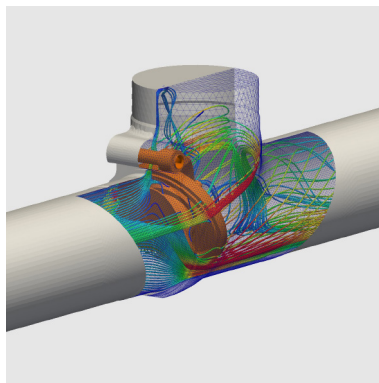
- Swing check valves to avoid the return of the fluid in case of lack of pressure, designed to work both with clean and dirty water.
- 100% Water tight.

APPLICATION:

Between flanges.

32 - SERIES

SWING CHECK VALVES

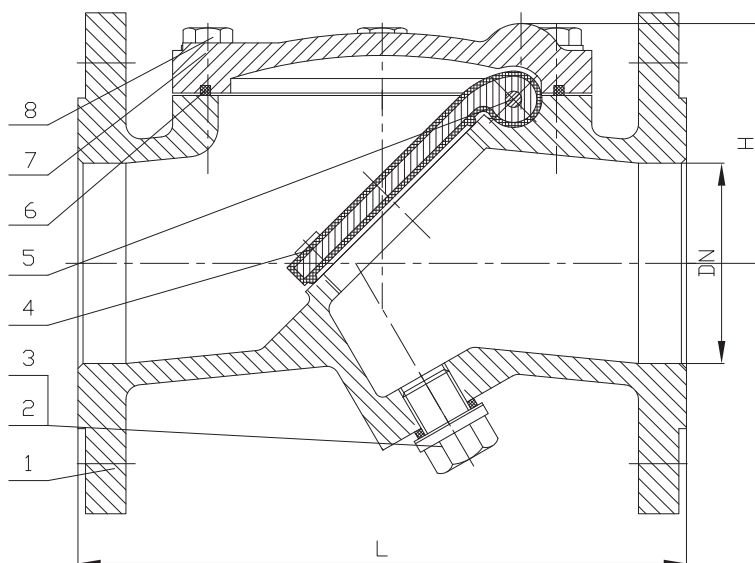


MAIN FEATURES:

- 100% water tight.
- Stainless steel bolts.
- Stainless steel purge plug.
- WRAS certificate for drinking water.
- Working temperature between -10°C and 90°C.

STANDARDS APPLIED:

- Hydrostatic tests according to EN 12266-1, class A.
- CE Directive.
- Distance between flanges according to DIN 3202 F1.
- Side flanges according to ISO 7005-1.



DIMENSIONS

DN	L	H
50	200	83
65	240	90
80	260	95
100	300	110
125	350	135
150	400	156
200	500	186
250	600	214
300	700	245
350	800	360

DESCRIPTION

1	BODY	GJS500
2	PURGE PLUG	A3
3	MINIPAD	PTFE
4	DISC	GJS500 + EPDM
5	HING PIN	AISI 304
6	GASKET	NBR
7	BONNET	GJS500
8	BOLT	A3
	PAINTING RAL 5015	Epoxy 250 µm

The images and drawings are non contractual.
The specifications of the shown products could vary with previous notice.